

DARTMOUTH HERITAGE MUSEUM'S
THE GAZETTE
 QUARTERLY NEWSLETTER



**NEW YEAR,
 NEW DHM**

BY ARIES CASTEEL

A new year brings change for everyone - and this year DHM is no different. As many are aware, the last half of 2020 saw Evergreen House playing host to a film - an exciting experience for all! Like all good things, the sets were temporary, and soon everything was being cleared out by the crews. We were left with a lot of empty space on the main floor and a decision to make. Should we move everything back and keep things as they were? Or should we take this opportunity, get into the seasonal spirit, and reimagine some of our spaces? I am sure by the title of this little article you will already have surmised our choice.

In re-imagining a few of our main spaces, we have made room for new artifacts to be displayed, and new stories to be told. The result is something we are very proud of, and very excited to share with YOU, our community! One of our favourite new exhibits is in the Green Parlour. Located at the back of the house with a large picture window, this parlour was originally a dining room. Later, it served as famed folklorist Helen Creighton's writing room - her desk still sits by the window! Given the gorgeous lighting, we decided to take advantage of the space to establish our new Local Makers Gallery (opening March 31st)! This room will feature works of art, wares, and craft from Dartmouth. Given the vast amount of local art and wares in our collection, we thought this a perfect way to...

continued on Page 2

IN THIS ISSUE:

New Year, New DHM	1
Dartmouth's Ice Cutting Industry	2
Collections Corner	3-4
From the Desk of the Curator and Volunteer Voices	5
Exhibit & Gift Shop News	6
Membership	7
Visitor and Contact Info	8

DARTMOUTH'S ICE INDUSTRY

BY ELIZABETH CARBONNEAU

Before electric refrigerators were common household appliances, people had to keep their food fresh by storing it with ice. And before freezers and ice makers existed, ice had to be formed naturally and harvested. Dartmouth's winter climate and abundance of lakes meant the city was perfectly suited to the ice industry. For over one hundred years, hundreds of Dartmouth men scrambled to profit from the harvest, marketing, and sale of local lake ice.

In 1836, Adam Laidlaw was the first Dartmouthian to cut lake ice. He sold the blocks to William Foster, who advertised and sold it at his store near the Halifax-Dartmouth ferry landing. Many local families rose to prosperity by joining the ice industry. The most well-known of these families within the industry were the Carter, Chittick, Otto, Hutchinson, and Glendenning families.

The Shubenacadie Canal Company owned the water rights to Lake Banook and Lake Micmac and charged the families a fee to cut and remove the ice. The ice industry only collapsed during the winter of 1950-51; that year's "crop" failed due to mild temperatures, and electric household refrigerators were becoming increasingly common. Typically, the ice harvest began just after Christmas and continued through February. Several hundred local men worked in the industry. Their work hours were long (upwards of eighteen hours!) and the conditions were dangerous (many men drowned



continued from Front Page...

showcase the rich material and artistic history of Dartmouth for all visitors to appreciate. We invite you to come by and see our new spaces, and receive an updated tour as well! To book your appointment, just give us a call (902 - 464 - 2300) or send us an email (info@dartmouthmuseum.ca) today! Please remember that appointments should be booked at least 24hrs in advance, no more than 5 persons to a group, and wearing a face mask is mandatory. We hope to see you soon!



or were injured by panicking horses). Horses pulled ploughs to clear snow off the ice and then hauled the cut blocks, which measured two square feet, to storage. Motorized tractors eventually replaced the horses.

Ice blocks were originally stored in underground vaults. However, demand for ice constantly increased and many families elected to build massive barn-style ice houses. These buildings were usually one hundred feet long and twenty feet high. Their walls were insulated with sawdust or cinders and slides or conveyor belts carried the blocks from the lake into the storage areas. The largest ice house had a capacity of 3000 tons. The shores of Lake Banook were riddled with these ice storage buildings.

Although Dartmouth's ice harvesting industry has long since shut, it continues to serve as a source of inspiration and fascination for many local historians and heritage enthusiasts. The ice business no doubt helped to ensure that Dartmouth would become the prosperous community it is today.

COLLECTIONS CORNER:

ARTIFACT MYSTERY

BY SHANNON BAXTER

Part of my job as the Collections Manager here at the Dartmouth Heritage Museum is to solve what I like to call Artifact Mysteries. The Museum Society has been actively collecting artifacts relating to the heritage of Dartmouth since the early 1960s, even before it had an established museum in 1967. This has accumulated in over 40,000 artifacts, which is a considerable amount of items to keep track of. As is the case in almost every single museum around the globe, a few things can fall through the cracks.

Provenance is an important factor in Collections Management. It answers the questions of who owned the artifacts before they were donated to the museum, and their significance to the local or regional history. The records associated with each artifact are connected by its accession number, a marker that identifies each item individually. Depending on how the accession number is applied to an artefact (a process meant to be



reversible) over time, these numbers can fade or be made illegible. In museological terms, this is called 'Disassociation.' This is an issue I try to solve whenever I stumble across an example. The most interesting example of this occurred recently when working at the museum's artifact storage facility. I was photographing artifacts in a tray labelled as "Tobacco Related Artifacts." Cigar Boxes, Cigarette Cases, smoking pipes all owned by local Dartmouthians were in this tray. It even included an old tin that proudly proclaimed in bright red paint that it had been discovered in a cellar back in the 1970s, and had not been opened since 1945. I know nothing about tobacco, so I don't know whether this means the tobacco plugs inside have aged very well. However, the most interesting item in this tray was this long, flat, brass artifact with an odd bulbous appendage on the side. At first glance, it looks like the oddest and most inefficient smoking pipe ever to be created. I assumed, since it was in a box labelled Tobacco Related Artifacts, that the item was indeed related to smoking. It soon became apparent that there were flaws in this logic. Firstly, there was a hinged lid at the far end of the 'pipe' close to the bulbous case, which had its own lid on top.

With no other openings, it was clear this was not used for any pipe smoking activities. However, there was nothing inside either spaces that indicated what was supposed to be housed within.

What was more, a paper tag identified the item as "1969x.001.001?"

Emphasis on the question mark here.



COLLECTIONS CORNER CONTINUED...

Looking up the number in our Collection's Database, it came up with an entirely different artifact. I knew right away that this was not the correct number for the item I had found. When I found the accession number on the item itself, it was clearly worn away with time, so it was only clear that the item was donated some time in the 1960s, but I had no clue when.

It took me a few days after photographing and setting aside this artifact that I came across my answer, quite accidentally. I had moved on and had photographed artifacts relating to Writing: portable writing desks, inkstands, and inkwells. One of the artifacts had the accession number 1960x.001.002

Curious, I decided to look up 1960x.001.001

What I found was a record describing an "Ancient

Writing Set" that included an attached inkwell and a large brass case for holding long ink quills. The case allegedly came from Malta. It is possible that a local from Dartmouth travelled to the area, and found this writing set and thought it would be a very interesting item to bring back home with them. Reading the description carefully, I realized that it matched the mysterious Not-A-Pipe that I had puzzled over the week before.

Success! That meant I could confidently identify the artifact, make it a new label with the proper number on it, and upload the photographs I took onto the database. It is always immensely satisfying to not only solve these artifact mysteries, but to also end up learning something new and interesting about the artifact collection.



Close up of "Ancient Writing Set." Ink would be stored in the small box.

DHM 60x.1.1

Close up of "Ancient Writing Set." Quills would be stored in this long case.



DHM 60x.1.1

FROM THE CURATOR'S DESK...

New Horizons for Seniors Program

BY TERRY EYLAND

Happy Days!! No, I'm not referring to the Seventies' sitcom with Fonzy and the crowd. I'm talking accessibility to the lower yard. We received the funding from the Government of Canada through the New Horizons for Seniors Program.

(Learn more at:

<https://www.canada.ca/en/employment-social-development/programs/new-horizons-seniors.html>)

Canada

This funding includes infrastructure dollars to build a staircase to the lower section of the yard. Anyone who knows the yard knows how steep the grade is and how easy it would be to slip on the grass and tumble down the hill. The staircase is in the design stage and will probably be about 20 steps in all with landings every five or six steps, to allow rest spots for those who find stairs a challenge. This part of the project is the first phase in our efforts to make the property more

accessible.

The funding also includes infrastructure money to help with this summer's inaugural Summer Camps Program that was put on hold thanks to COVID-19. Part of the funding is also being invested in the "Rooms at Evergreen", that new building in the yard, where state-of-the-art photo studio will allow for workshops dedicated to teaching pre-20th Century photographic processes. Like I said at the beginning: HAPPY DAYS!!



A Message From the Volunteer Coordinator:

Hello, I am Irene Cooper. I have been the Volunteers Coordinator for Evergreen House and Quaker House since September of 2020. I have been volunteering in many capacities for over 50 years, and I have been volunteering in Collections at Evergreen House for over 3 years and I am on your Board of Directors. Covid 19 has changed things all over and for your Museums as well. We value our volunteers' time and interest. I have been touching base with them and many are interested in returning. We have positions for almost every interest - reception, tour guide, gardening, web site, events, collections, photography, and more. Please go to our website to print an application or you can pick one up at Evergreen House if you are interested in volunteering with us. Together we can make your Museums fun places to volunteer and visit!



EVENT AND EXHIBIT NEWS

Alderney Library Display

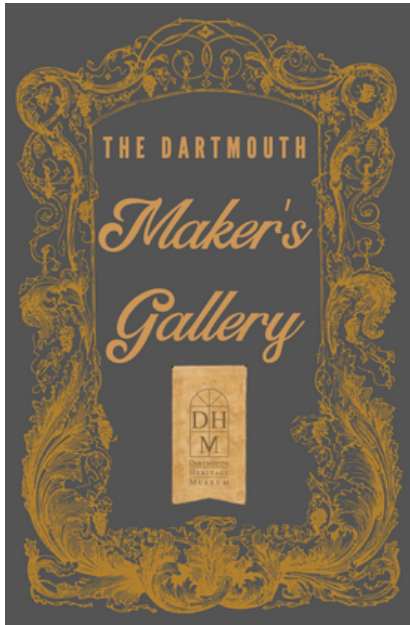
The DHM Spring display on Early Dartmouth Medical and Dental Equipment will be on display at the Alderney Gate Library from March through June. The display case is located near the elevators on the main floor.

Dartmouth Makers' Gallery

Opening March 31st, 2021

The name "Maker's Gallery" came from the intended purpose of the Gallery: to showcase the large number of objects and artworks in our collection which were made either in or for Dartmouth, and either by or for Dartmouth residents.

Our Collection is especially large - boasting over 40,000 photographs alone! - even a much larger museum would be challenged to display or showcase even half the artifacts. Still, we know and love the great community spirit in Dartmouth, and we want to allow visitors to experience as much as possible from our vast and interesting collection.



Thus, we bring you the Dartmouth Maker's Gallery: a space of rotating artwork and artifacts aimed at highlighting artifacts and artisans with strong Dartmouth connections.

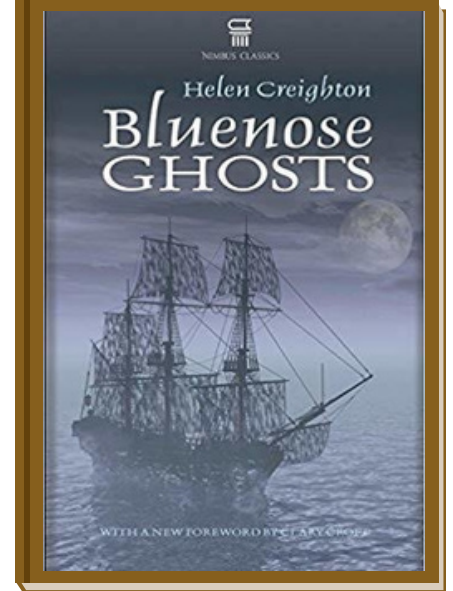
We hope to see you soon!*

*Please see back page for details on how to visit

GIFT SHOP SPOTLIGHT

Bluenose Ghosts by Helen Creighton

Ghosts guarding buried treasure, phantom ships, haunted houses and supernatural omens —these are just some of the strange phenomena that you will encounter in *Bluenose Ghosts*. Unexplained mysteries all the more chilling because they are the experiences of ordinary people, as told to



Bluenose Ghosts, 2nd ed. \$15

Helen Creighton. So when the moon is full and the wind is howling, be prepared to be spooked by apparitions and things that go bump in the night.

Helen Creighton Collection Postcards

A set of four postcards featuring beautifully photographed artifacts from the Dartmouth Heritage Museum's Collection that were owned by Helen Creighton. A perfect gift for any Helen Creighton enthusiast. Card dimensions: 5-1/2" x 4-1/4".



Helen Creighton Postcards, \$2

DHMS MEMBERSHIP

DHM has 3 categories of membership for purchase:

- **"Individual Membership"** is one (1) person
- **"Family membership"** is for a family unit, consisting of at least one (1) adult and one child under the age of eighteen (18)
- **"Group membership"** is for societies, museums, universities, libraries, corporations, firms, partnerships, foundations and governmental departments.

Why become a member?

The Dartmouth Heritage Museum Society operates the Dartmouth Heritage Museum on behalf of the Halifax Regional Municipality, which owns both historic houses and the collection. This allows interested community members to have a real and impactful voice in what happens with the DHM. One of the easiest ways to use your voice is by attending and voting at our Annual General Meeting (AGM). Society members have the right to vote for Board Director nominees and on changes to the Bylaws, both of which have incredible influence on the Society and the museum itself.

Membership Opportunities and Benefits:

- Voting! Society members have the right to vote on important issues at each Annual General Meeting.
- A 10% discount from the gift shop. This discount is applied by our staff in-person with a valid membership card, or online by using your unique discount code. Please contact museum staff for any help needed with this process.
- Early-bird access to event tickets. This includes popular events such as our Murder Mystery Nights, exhibit openings, and more!
- Discounts on events and activities. In addition to the ability to purchase tickets early, we often have deals and discounts for members.

DHMS Membership Form

Individual Membership - \$20

Individual membership entitles you to invitations and early-bird ticket sales for exhibit openings and functions, a \$10 tax receipt, our newsletter, and a vote at our Annual General Meeting.

Family Membership - \$30

Family membership entitles you and your family invitations and early-bird ticket sales for exhibit openings and function, a \$15 tax receipt, our newsletter and a vote at our AGM. Family membership includes two parents and children under 18.

Group Membership - Please contact the museum for more information.

Name: _____ Date: _____

Address: _____

Phone: _____ E-mail: _____

Select Membership Type	Annual Fee	# Years	Total
Individual Member (tax receipt for \$10.00)	\$20.00		\$
Family Member (tax receipt for \$15.00) Includes parents and children under 18	\$30.00		\$
Total Membership Fee			\$
Donations are helpful and appreciated with tax receipts issued for the full amount. Would you like to make a donation at this time? If yes, please indicate amount in the box to the right.			\$
Total Payable (Membership + Donation)			\$

Please make cheques payable to the Dartmouth Heritage Museum Society and send to:

Dartmouth Heritage Museum Society, 26 Newcastle Street, Dartmouth NS, B2Y 3M5

Check the box if you would like to receive the E-bulletin Yes No If yes, by ___ email or ___ post mail?

Would you like to receive our Newsletters? Yes No If yes, by ___ email or ___ post mail?

From time to time, we recognize our members and donors publicly. We respect your privacy so are asking that you expressly indicate whether we can publish your name, or not: Yes No

The Dartmouth Heritage Museum

"Protecting, preserving, and promoting our heritage."



Evergreen House

26 Newcastle St
Dartmouth, Nova Scotia

Hours:

Sept-May	June-Aug
Tues-Fri	Tues-Sun
10am-5pm	10am-5pm



CONTACT US

26 Newcastle St
Dartmouth, Nova Scotia
Canada
B2Y 3M5

www.dartmouthheritagemuseum.ns.ca
902-464-2300



Quaker House

57 Ochterloney St
Dartmouth, Nova Scotia

Hours:

June-August
Tues-Sun
10am-5pm



Visiting the Museum:

Due to current Covid-19 related restrictions, the museum at Evergreen House is open BY APPOINTMENT ONLY. Appointments can be made by contacting the museum. Please note that face masks are required when visiting the museum. Appointments should be booked at LEAST 24hrs in advance. Visiting groups are limited to 5 persons maximum. All visits and tours remain free of charge for all. Donations welcome. For updated information on visiting, please contact the museum or visit our website or social media accounts.